



Project List and References available upon request.

Reservoir Woods, Roseville



Parks and *Recreation*

CLOSE
LANDSCAPE ARCHITECTURE +

Parks, trails, and open space are critical to the excellent quality of life in the Twin Cities. Minneapolis and Saint Paul are known nationally for their park systems envisioned in the late 1800's by landscape architect HWS Cleveland. This legacy and commitment to open space as part of our communal life continue to the present day. From renovation of older existing city parks to the establishment of entirely new systems in exurbia, landscape architects have been integral to the process of preserving, restoring, and developing green space for the enjoyment of Minnesota citizens and for future generations.

We, at CLOSE Landscape Architecture +, have been involved with park and recreation planning and design for over three decades. We would like to introduce ourselves to you and show you some of our work....



Bob Close,
Founder and President



Bruce Jacobson,
Vice President and Design Principal



Jim Robin,
Senior Associate



Deb Bartels,
Senior Associate



Jean Garbarini,
Senior Associate



Bridging a ravine . . .

Tilted posts support a new pedestrian bridge at Schaar's Bluff and mimic the pattern of adjacent tree trunks.

"The nice thing is, if you improve the quality of life for people in your city, you will end up attracting new people and employers. "

Richard M Daley, mayor of Chicago



Healing and protecting fragile places . . .

An elevated boardwalk in Wolfe Park, St. Louis Park, prevents bank erosion around a heavily used urban lake.

CREATIVE SOLUTIONS TO TECHNICAL CHALLENGES



Making a 100 foot climb restful. . .

Franklin Avenue steps, use a Japanese mountain climbing principle of a 3-5-7 step sequence.



A swimming hole experience. . .

A swimming pond was created in Flandreau State Park, New Ulm, where clean, safe natural water didn't exist.



The sand basin prior to filling.

CLOSE Landscape Architecture+
400 1st Avenue North, Suite 528
Minneapolis, MN 55401
612.455.2980
612-455-2204 (f)
www.cloسلandarch.com

VITAL STATISTICS

Firm Focus:
Landscape architecture, planning, and site design.
Park and recreation design makes up 30% of our work.

Firm Owners and Principals:
Bob Close, founder and President
Bruce Jacobson, Vice President

Staff:
6 registered landscape architects
5 trained landscape architects
1 graphic designer
1 administrator

Firm History:
Founded by Bob Close in 1977.
Incorporated in 1987. Current status: S-Corp.
No branch offices

- Clients include:**
- St Paul Park and Recreation Department
 - Minneapolis Park and Recreation Board
 - Dakota County Parks
 - Minnesota Historical Society
 - City of Roseville
 - City of St Anthony
 - City of Northfield
 - City of Lake Elmo
 - City of Ramsey
 - City of St. Louis Park

"Why should I care about future generations? What have they ever done for me?"

Groucho Marx

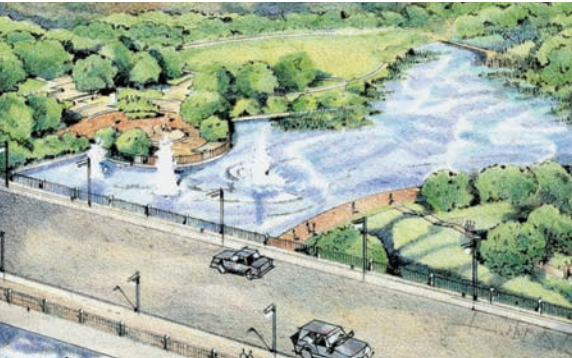


Whether working with private clients or communities, we at CLOSE Landscape Architecture+ are known for our ability to generate ideas and shape visions that address the complex issues of human activity on the land.

PLANNING AND PROCESS

In park planning, good development is hung on an existing framework of natural and human-made systems. Successful planning requires the ability to understand and build upon the interaction of these systems and the art of treading the fine line between dreams and the achievable.

We have a proven process to engage community residents, businesses, elected leaders and agency staff in focused dialogue to achieve consensus and move ideas into implementation.



System Planning

City of Ramsey Park and Open Space System
Dakota County Strategic Plan
Como Campus Concept Plan
Lake Elmo Master Plan

Other Plans

Above the Falls Phase I
East River Flats
A Concept Plan for the Mississippi River Gorge
Midtown Greenway

Private Developments

Whistling Valley, Lake Elmo, MN
Harmony, Carver County, MN

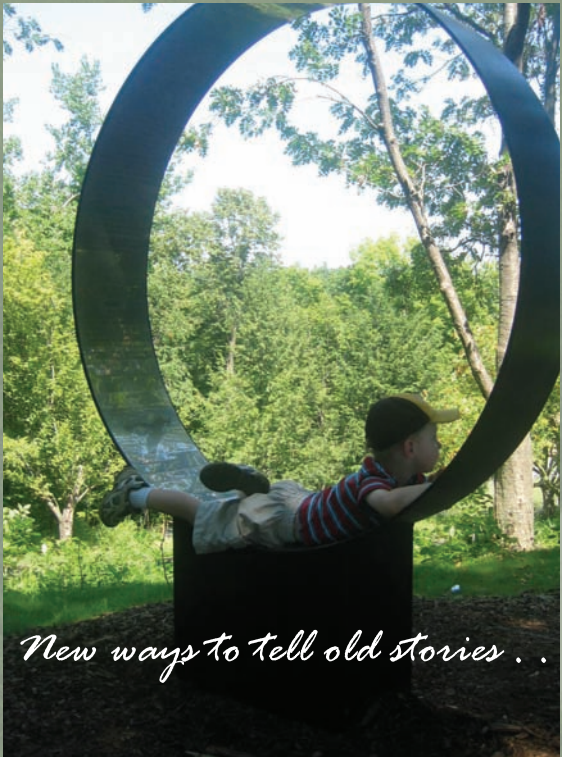


© Regents of the University of Minnesota. All rights reserved. Used with permission.

Revealing the unseen or forgotten....

Five stormwater basins at the Arboretum demonstrate the differing quantities of stormwater run-off generated by different paving treatments.

... and we are involved.



New ways to tell old stories . . .

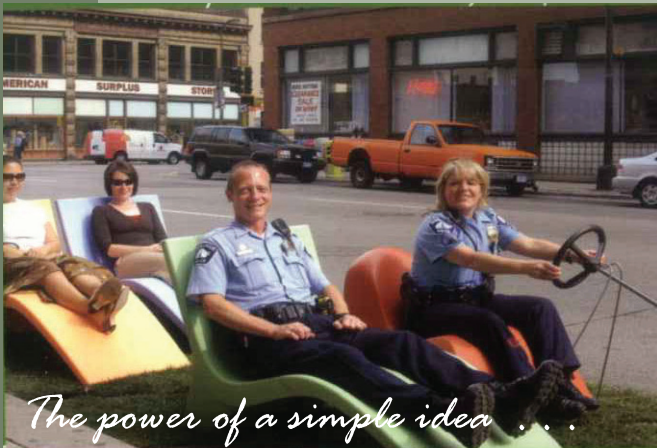
"My interest is in the future, because I am going to spend the rest of my life there."

C. F. Kettering

The idea for the story ring began as an interpretive device for an 8000 Year Walk at Schaar's Bluff in Spring Lake Park Reserve. The ring frames a view and creates a bench where visitors can relax while reading the encircling "inside" story.

INTERPRETATION

People care about places they know. Interpretation exposes and deepens the meaning of a landscape. It is integral to many of our designs.



The power of a simple idea . . .

National PARK(ing) Day 2007 — a global event — was an opportunity for CLOSE Landscape Architecture+ to transform a public parking space into a park for the day and remind passerbys how the quality of our daily lives is enhanced by green space like parks, playground, and gardens.

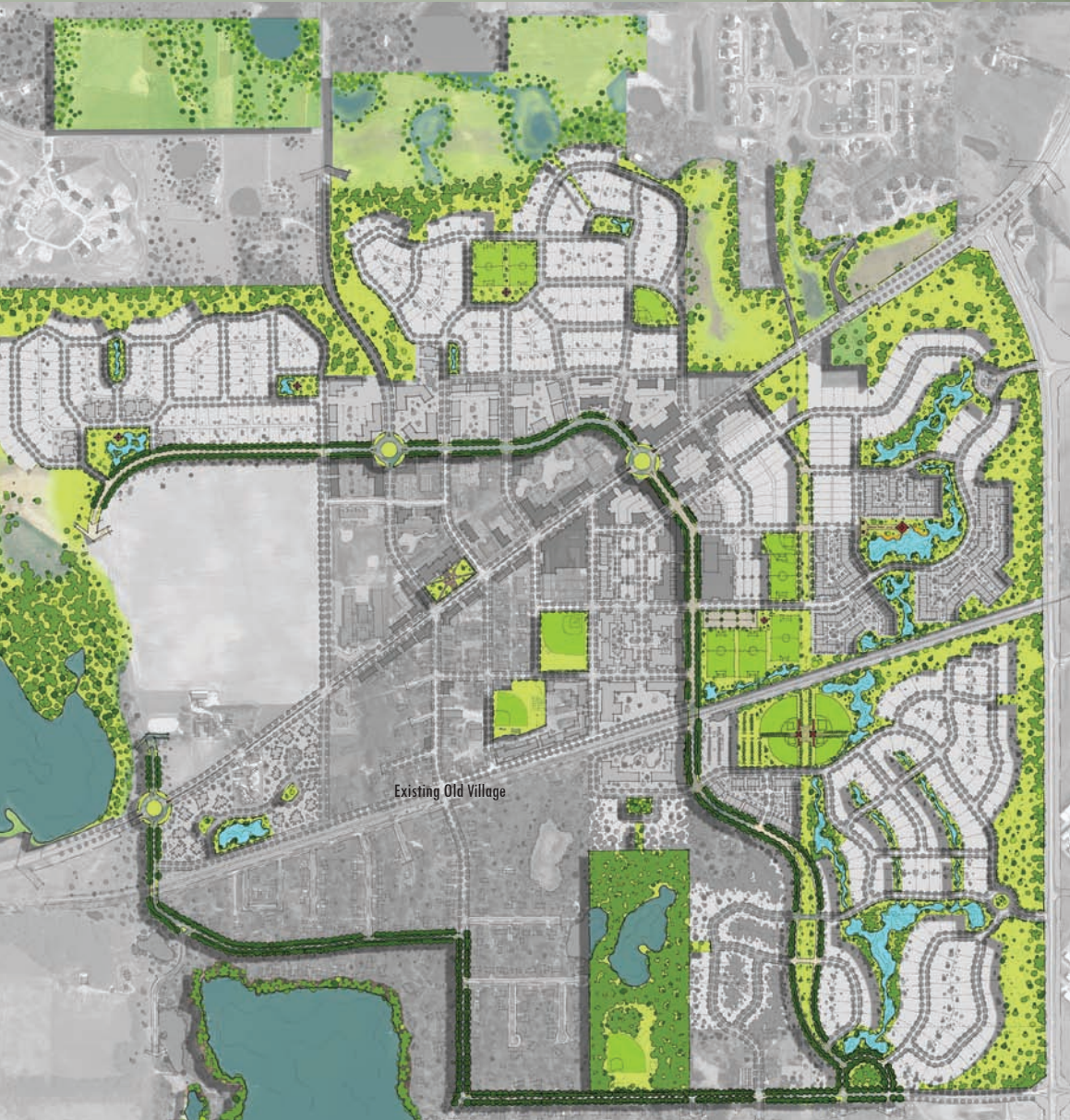


The unexpected captures our attention . . .



Drawing inspiration from the history of a place . . .

Four small sitting plazas in Upper Landing Park are an abstraction of river eddies behind check dams. Embossed concrete bands on earthen mounds at the east end of the park mark the elevations of past Mississippi flood events in downtown St Paul.



Lake Elmo Old Village Parks and Open Space Plan

“Look forward a century, to the time when the city has a population of a million, and think what will be their wants.”

HWS Cleveland



*"When we tug at a single thing in nature,
we find it attached to the rest of the world."*

John Muir

SITE DESIGN AND CONSTRUCTION

CLOSE Landscape Architecture+ has a long list of constructed park and recreation projects. Whether designing neighborhood, municipal, or regional parks, we balance form, function, and finances. Our solutions are practical but imaginative responses to budget, maintenance requirements, and the need for durability.

- Our landscape architects have built over 50 municipal parks.
- Our clients include the Minneapolis Park and Recreation Board, St Paul Parks and Recreation, Dakota County, Bloomington, Richfield, Deephaven, Northfield, Burnsville, St. Anthony, and Roseville.

